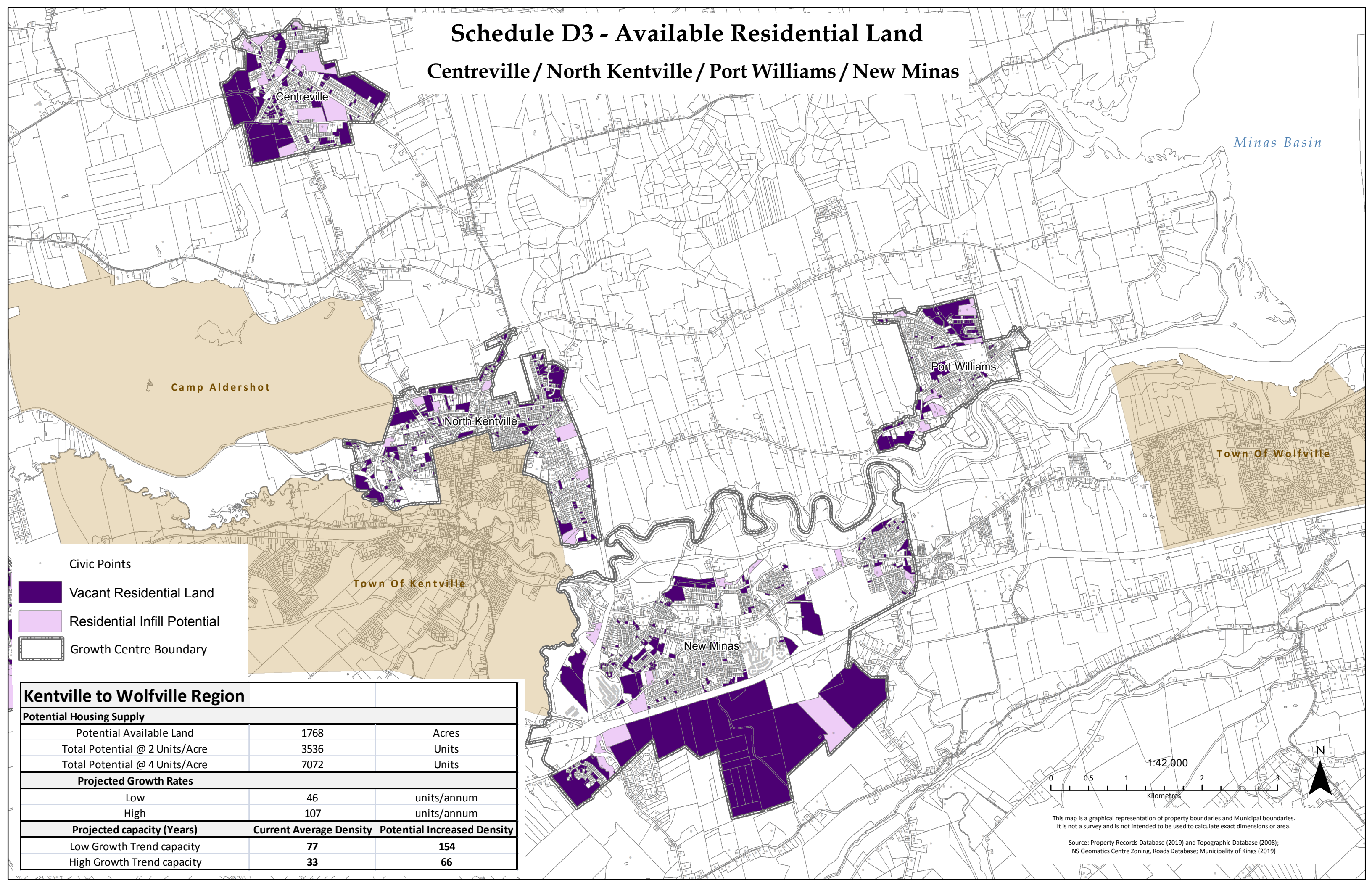


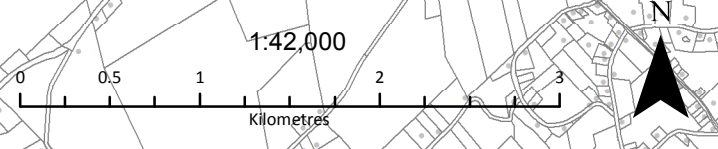
Schedule D3 - Available Residential Land

Centreville / North Kentville / Port Williams / New Minas



- Civic Points
- Vacant Residential Land
- Residential Infill Potential
- Growth Centre Boundary

Kentville to Wolfville Region		
Potential Housing Supply		
Potential Available Land	1768	Acres
Total Potential @ 2 Units/Acre	3536	Units
Total Potential @ 4 Units/Acre	7072	Units
Projected Growth Rates		
Low	46	units/annum
High	107	units/annum
Projected capacity (Years)	Current Average Density	Potential Increased Density
Low Growth Trend capacity	77	154
High Growth Trend capacity	33	66



This map is a graphical representation of property boundaries and Municipal boundaries. It is not a survey and is not intended to be used to calculate exact dimensions or area.

Source: Property Records Database (2019) and Topographic Database (2008); NS Geomatics Centre Zoning, Roads Database; Municipality of Kings (2019)